

Sold

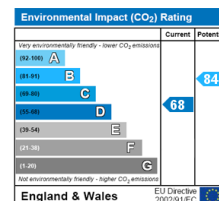
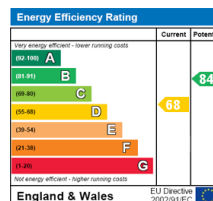
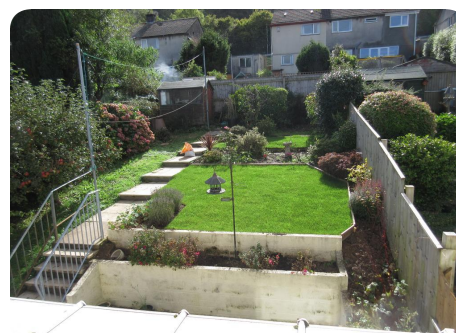
Donnington Drive, Egguckland, Plymouth PL3 6QT



Offers in Region of £169,950

3 bedroom Semi-Detached

- ✓ NO ONWARD CHAIN
- ✓ 3 Bedrooms
- ✓ Off Road Parking & Garage
- ✓ Conservatory
- ✓ Rear Garden
- ✓ Double Glazing & Gas Central Heating
- ✓ Close to local Amenities
- ✓ Walking Distance to Local Schools





50 Victoria Road
St Budeaux
Plymouth, PL5 1RG

01752 54 77 89
www.viewme.co.uk

Description

Viewme are extremely delighted to bring to the Sales market this 3 bedroom property in the highly sought after area of Eggbuckland.

The property briefly comprises:

Ground Floor:

Entrance Hallway, open plan lounge/dining room, Kitchen, conservatory, garage and garden.

First Floor:

Landing, Shower Room, Master Bedroom, Bedroom 2 (Double), Bedroom 3 (good sized single)

Location

Eggbuckland is a popular residential area with the following primary and secondary schools close by: Austin Farm Primary School & Eggbuckland Community College. A short distance away are a further two primary schools: Compton Primary and St Edwards Primary. Other schools are accessible via bus.

Local amenities include: Major bus route into and away from City Centre, 2 x Co-op supermarkets, Tesco Express and fuel station, bakery, post office, fast food takeaway establishments, GP Surgeries, Dental Practices, Pharmacies to name a few.

Churches include: St Edwards, Emmanuel and Compton.

Ground Floor

Entrance Hallway - On entering the double glazed uPVC door you enter the entrance hallway which gives access to all accommodation on the ground and first floor.

The stairwell takes you to the first floor whereas turn right into the open plan lounge/dining area.

Neutrally decorated with carpet flooring. A line of coat hooks and an area for footwear below.

Lounge Area - 12' 0" x 12' 5" (3.68m x 3.82m) Good sized light and airy lounge area with double glazed window to the front of the property.

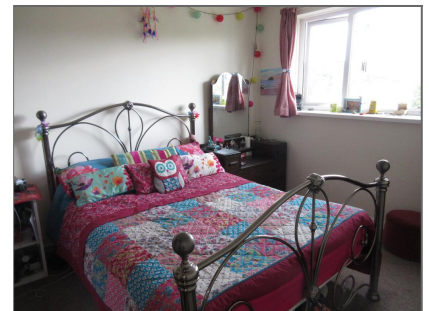
Neutrally decorated with carpet flooring, wall mounted radiator, electrical and



Lounge



Lounge



Master Bedroom



2nd Double Bedroom

television sockets. Feature fireplace with electric fire and useful side storage shelves.

Dining Area - 10' 8" x 7' 3" (3.27m x 2.22m) From the lounge you enter the dining area which again is neutrally decorated and has space for a good sized dining table and chairs.

Carpet flooring, wall mounted radiator and electrical sockets.

Kitchen - 10' 0" x 8' 0" (3.08m x 2.45m) From the dining area you enter the kitchen - laid out in a 'U' shape with base and eye level units and wood effect work surface. Additional space for under counter fridge and freezer gas oven (supplied) not forgetting the washing machine.

A window above the sink looks out towards the conservatory, another modesty glazed panel faces the dining area whilst the double glazed back door gives access to a covered walkway and into the garage.

A built in larder/under stair storage cupboard is a good addition to the kitchen.

Vinyl flooring, stainless steel sink with mixer tap, plenty of electrical sockets.

Conservatory - 12' 2" x 7' 3" (3.74m x 2.23m) A great addition to any home. This light and airy space is ideal for relaxing in the Summer months and useful as additional living space in the Winter.

The door to the conservatory gives access to the tiered rear garden area.

Vinyl flooring, wall mounted radiator, fully glazed with opening windows.

First Floor

Landing Area - From the stairwell you come to the first floor landing area which gives access to all areas of the first floor accommodation.

Double glazed window to the side aspect, carpet flooring, access to the loft area which is partially boarded with a loft ladder.

Shower Room - 5' 6" x 6' 3" (1.69m x 1.91m) Good sized shower room with white suite comprising:

Low level WC, wash hand basin and ample shower cubicle.

Modesty glazed double glazed window to the side of the property, vinyl flooring and wall mounted heated towel rail.

Bedroom 2 (Double) - 10' 7" x 9' 2" (3.25m x 2.8m) This is a good sized double bedroom overlooking the rear garden. It is currently used as a 'music room' but



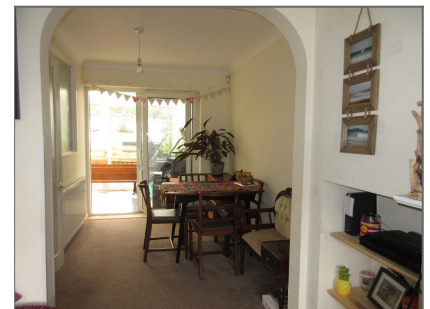
Shower Room



Conservatory



Kitchen



Dining Area



you can see it has ample space for a double bed with associated bedroom furniture.

It has useful built in high level storage. Again is neutrally decorated with carpet flooring, wall mounted radiator, double glazed window to the rear and electrical sockets.

Master Bedroom - 12' 0" x 9' 2" (3.69m x 2.82m) This room is currently fitted with built in storage. It has enough room for a double or king sized bed and associate bedroom furniture. The good sized double glazed window overlooks the front of the property.

Carpet flooring, wall mounted radiator with television and electrical sockets.

Bedroom 3 (Single) - 5' 6" x 8' 9" (1.69m x 2.69m) Currently used as a dressing room this good sized single bedroom is ideal as a nursery, a bedroom for a small child, office or as it is a dressing room.

Neutrally decorated, carpet flooring, wall mounted radiator and double glazed window to the front of the property.

Exterior

Front Garden - Tiered front garden area mostly laid to concrete and stone chippings.

A few steps with handrail lead to the front door.

Rear Garden - The rear garden is also tiered but has a flat area just outside the conservatory ideal for barbeques and alfresco dining with a wooden pergola above. This area also houses a stone storage shed.

Steps lead up into the garden area with lawn and mature shrubs. Ideal storage shed stands in the left hand corner of the garden.

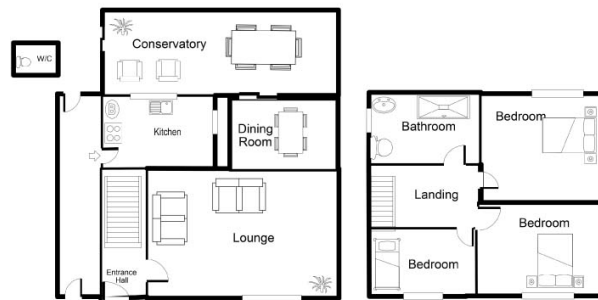
The garden has mature apple and plumb trees along with other mature shrubs. A handmade bench sits to the left of the garden a good position to admire the outside space.

Single Garage - Single garage with hard stand parking to the front.

The garage has a metal up and over door and a rear door which gives to the rear of the property.

To the right of the garage a covered walkway from the front of the property straight through to the rear garden with doors either end.

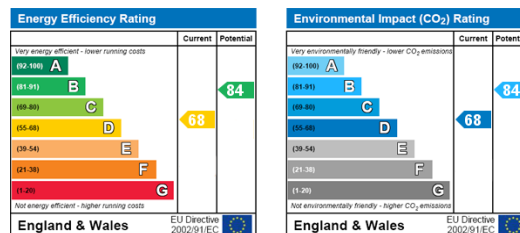
Floorplans



This floorplan is not drawn to scale

Floorplan (not to scale)

Energy Efficiency and Environmental Impact



Additional Information

Council Tax Banding: 'C' - £1,549.04 - 2017/18 (Data captured from Plymouth City Council Web site)

Disclaimer: We do our best to ensure that our sales particulars are accurate and are not misleading. We also ask our clients to check their own sales particulars and verify the information. Therefore, these particulars, whilst believed to be accurate are set out as a general outline for guidance only and do not constitute any part of an offer or contract. Intending purchasers should not rely on them as statements or representation of fact, but must satisfy themselves by inspection or otherwise as to their accuracy. We have not carried out a detailed survey nor tested the services, appliances and specific fittings. Room sizes should not be relied upon for carpets and furnishings, and the measurements given are approximate. No person in this firm's employment has the authority to make or give any representation or warranty in respect of the property. Tenure - Viewme have not had sight of the Title documents and the buyer is advised to obtain verification from their Solicitor or Surveyor. You are advised to contact the local authority for Council Tax information.